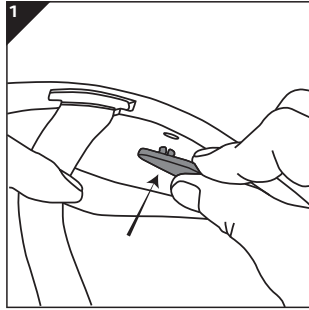


Install ScanStrap

Make your choice out of the three options to install the strap to your type of helmet:

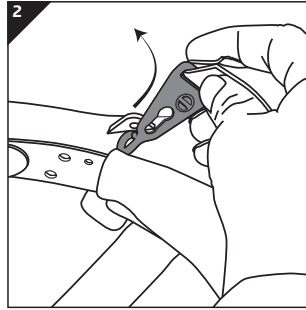
1. Pin attachment

Insert the two chin-strap pins into the helmet holes. Firmly press the pins until you hear a click.



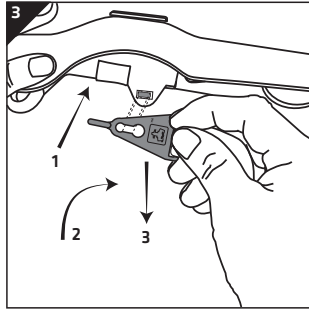
2. Hook attachment

Insert the hook into the strap holes at side and turn it over.



3. Hole attachment

- 1)Put the hole of the buckle over the pin at bracket of helmet.
- 2)Turn a quarter.
- 3)Pull the buckle downwards to secure.



4. Adjust the chin strap

Adjust the strap to ensure a secure fit underneath the chin and make sure it is properly tensioned.

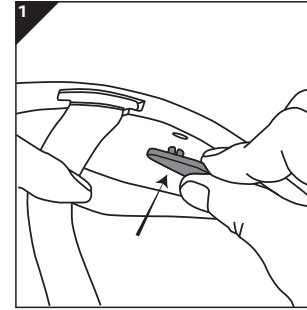


Install ScanStrap

Make your choice out of the three options to install the strap to your type of helmet:

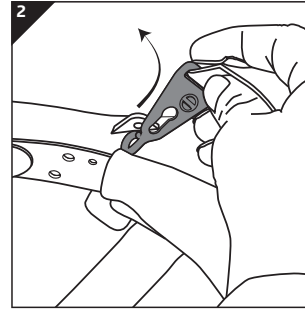
1. Pin attachment

Insert the two chin-strap pins into the helmet holes. Firmly press the pins until you hear a click.



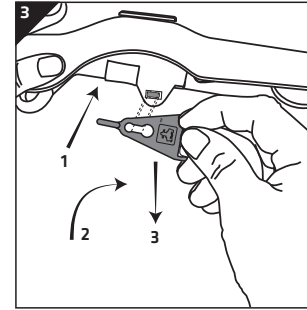
2. Hook attachment

Insert the hook into the strap holes at side and turn it over.



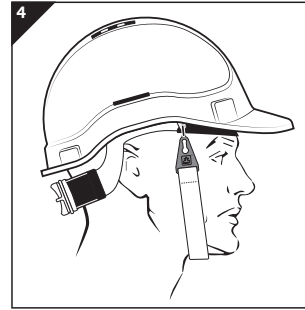
3. Hole attachment

- 1)Put the hole of the buckle over the pin at bracket of helmet.
- 2)Turn a quarter.
- 3)Pull the buckle downwards to secure.



4. Adjust the chin strap

Adjust the strap to ensure a secure fit underneath the chin and make sure it is properly tensioned.

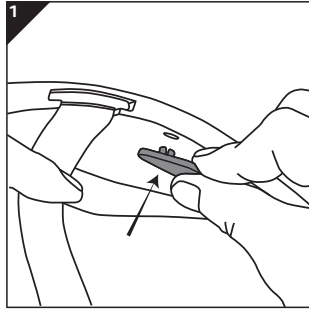


Install ScanStrap

Make your choice out of the three options to install the strap to your type of helmet:

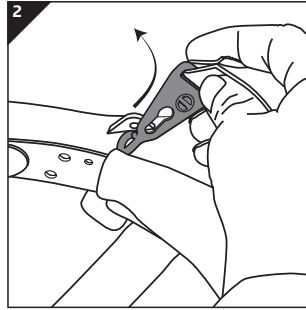
1. Pin attachment

Insert the two chin-strap pins into the helmet holes. Firmly press the pins until you hear a click.



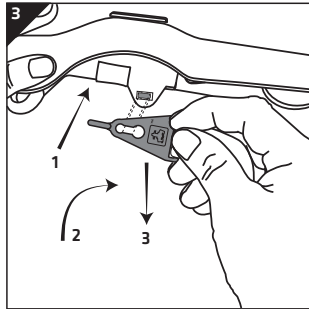
2. Hook attachment

Insert the hook into the strap holes at side and turn it over.



3. Hole attachment

- 1)Put the hole of the buckle over the pin at bracket of helmet.
- 2)Turn a quarter.
- 3)Pull the buckle downwards to secure.



4. Adjust the chin strap

Adjust the strap to ensure a secure fit underneath the chin and make sure it is properly tensioned.

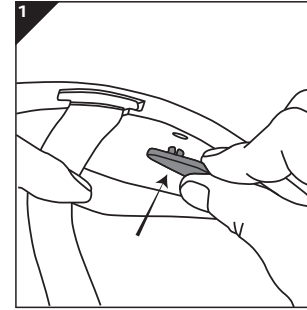


Install ScanStrap

Make your choice out of the three options to install the strap to your type of helmet:

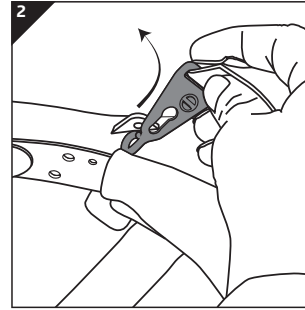
1. Pin attachment

Insert the two chin-strap pins into the helmet holes. Firmly press the pins until you hear a click.



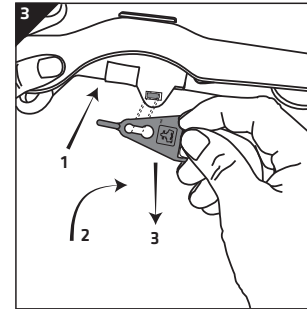
2. Hook attachment

Insert the hook into the strap holes at side and turn it over.



3. Hole attachment

- 1)Put the hole of the buckle over the pin at bracket of helmet.
- 2)Turn a quarter.
- 3)Pull the buckle downwards to secure.



4. Adjust the chin strap

Adjust the strap to ensure a secure fit underneath the chin and make sure it is properly tensioned.

